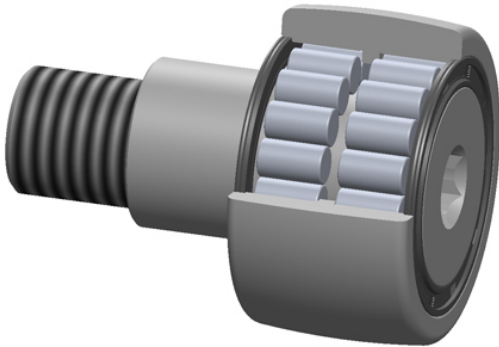




DAGHLFORGE OF AMERICA CORP.



PCI Procal Inc. CDCE-3.25 Crowned & Flat Cam Followers Bearings

Bearing No. CDCE-3.25

roller diameter:	3.2500 in
closure type:	Sealed
roller width:	1.7500 in
head type:	Hex
stud diameter:	1.7500 in
thread size:	1-1/4-12
stud length:	2.5000 in
radial dynamic load capacity:	27600 lbs
roller shape:	Crowned
radial static load capacity:	38000 lbs
roller material:	Chrome Steel
technical specifications:	Click here
bearing element:	Cylindrical Rollers

CDCE-3.25 Bearing 2D drawings and 3D CAD models