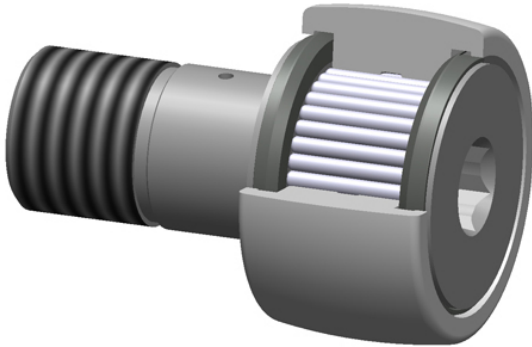




DAGHLFORGE OF AMERICA CORP.



HCCF-6.00-SH Bearing 2D drawings and 3D CAD models

PCI Procal Inc. HCCF-6.00-SH Crowned & Flat Cam Followers Bearings

Bearing No. HCCF-6.00-SH

roller diameter:	6.0000 in
closure type:	Sealed
roller width:	3.2500 in
head type:	Hex
stud diameter:	3.0000 in
thread size:	3-12
stud length:	6.0000 in
radial dynamic load capacity:	61690 lbs
roller shape:	Crowned
radial static load capacity:	157080 lbs
roller material:	Chrome Steel
technical specifications:	Click here
bearing element:	Needle Rollers