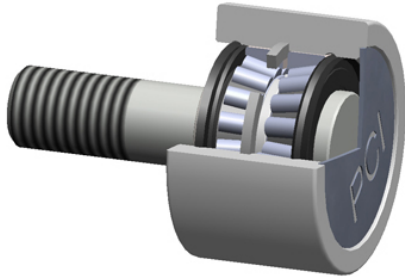




DAGHLFORGE OF AMERICA CORP.



PTR-6.00 Bearing 2D drawings and 3D CAD models

PCI Procal Inc. PTR-6.00 Crowned & Flat Cam Followers Bearings

Bearing No. PTR-6.00

| | |
|-------------------------------|----------------------------|
| roller diameter: | 6.0000 in |
| closure type: | Sealed |
| roller width: | 3.0000 in |
| head type: | Hex |
| stud diameter: | 2.5000 in |
| thread size: | 2-1/2-12 |
| stud length: | 5.5000 in |
| radial dynamic load capacity: | 35830 lbs |
| roller shape: | Flat |
| radial static load capacity: | 56200 lbs |
| roller material: | Chrome Steel |
| technical specifications: | Click here |
| bearing element: | Tapered Rollers |